

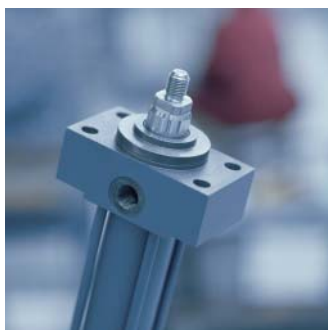
GoTo Products

Focused Delivery Program

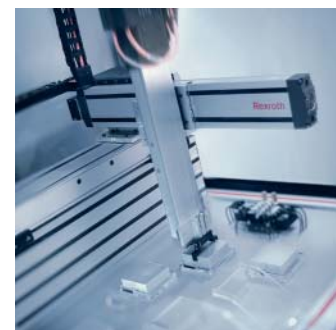
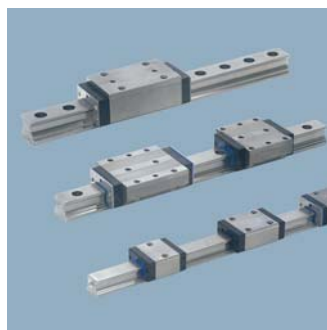
Electric Drives
and Controls



Hydraulics



Linear Motion
and Assembly
Technologies



Pneumatics



GoTo Focused Delivery Program: the products you need— when you need them

In today's competitive global manufacturing marketplace, every second counts. That's why we created the GoTo Focused Delivery Program. To give you an easy way to select quality Rexroth products. Gain the benefits of fast delivery. And enjoy one more competitive advantage in developing your applications.

GoTo Program features

- ▶ Wide range of products available for fast delivery
- ▶ Easy-to-use catalogs and website tools including an online buying option
- ▶ Competitive pricing on the products you need fast
- ▶ Proven Rexroth quality and performance

GoTo Program benefits

- ▶ Accelerated design and commissioning
- ▶ Faster time to market
- ▶ Reduced system costs
- ▶ Reliable machine performance
- ▶ Long-term customer satisfaction



For your next application or project, **GoTo** the winning team at Bosch Rexroth.

For more information on the **GoTo** Program and other Rexroth quality products, please visit our website at www.boschrexroth-us/GoTo

GoTo Program: how it works

The **GoTo** Focused Delivery Program streamlines selecting our most popular products and latest technologies. So you can get products faster from Bosch Rexroth.

You'll benefit from quicker access to product information, reliable lead times, simplified pricing and enhanced customer service. So you can move quickly to complete your application or project.

GoTo Program Catalogs show at-a-glance all of the products covered under the program. And you can "go to" quick reference internet pages for more information, technical specifications and ordering details.

GoTo catalogs



▲ Electric Drives and Controls



▲ Hydraulics



▲ Linear Motion and Assembly Technologies



▲ Pneumatics



- ▶ On-line data sheets
- ▶ Part numbers
- ▶ CAD drawings
- ▶ Dimensions
- ▶ Specifications
- ▶ Price & availability
- ▶ Catalog downloads

Here's how to get started:

- ▶ Use the **GoTo** Catalogs for Electric Drives and Controls, Hydraulics, Linear Motion and Assembly Technologies, and Pneumatics to identify the products you need.
- ▶ “Go to” the program’s web site for easy access to more product information, including data sheets, part numbers, specs, downloads and more.
- ▶ Once you have selected the products you need, contact Bosch Rexroth, your local distributor, or simply purchase online through Rexroth’s *eBusiness@Rexroth USA* portal. Not all, but most **GoTo** products can be purchased at www.boschrexroth-us.com/ebusiness.
- ▶ Our application experts are ready to provide assistance on the **GoTo** program or other Rexroth products you may need.

Bosch Rexroth America: global presence, local support

Bosch Rexroth leverages global manufacturing, sales, service, and distributor resources to provide swift delivery of the products you need. Our global resources, combined with local support, are prepared to satisfy your requirements.



Bosch Rexroth, The Drive & Control Company, is the supplier of choice to more than 500,000 customers worldwide. With approximately 28,000 employees in more than 80 countries, we are located where our customers are. Not only are we where you need us to be, but we offer dynamic motion-based technology that sets global standards for reliability, flexibility and innovation.

Bosch Rexroth Corporation

Corporate Headquarters
5150 Prairie Stone Parkway
Hoffman Estates, IL 60192-3707
Telephone (847) 645-3600
Facsimile (847) 645-6201
www.boschrexroth-us.com

USA

Bosch Rexroth Corporation
Electric Drives and Controls
5150 Prairie Stone Parkway
Hoffman Estates, IL 60192-3707
Telephone (847) 645-3600
Facsimile (847) 645-6201

Bosch Rexroth Corporation
Hydraulics
2315 City Line Road
Bethlehem, PA 18017-2131
Telephone (610) 694-8300
Facsimile (610) 694-8467

Bosch Rexroth Corporation
Linear Motion and Assembly
Technologies
816 E. Third Street
Buchanan, MI 49107
Telephone (800) 322-6724
Facsimile (269) 695-3446

14001 South Lakes Drive
Charlotte, NC 28273
Telephone (800) 438-5983
Facsimile (704) 583-0523

Bosch Rexroth Corporation
Hydraulics
8 Southchase Court
Fountain Inn, SC 29644-9018
Telephone (864) 967-2777
Facsimile (864) 967-8900

Bosch Rexroth Corporation
Pneumatics
1953 Mercer Road
Lexington, KY 40511-1021
Telephone (859) 254-8031
Facsimile (859) 281-3491

Bosch Rexroth

Regional Sales Offices:

Central

Bosch Rexroth Corporation
2150 Point Boulevard, Suite 800
Elgin, IL 60123
Telephone (224) 293-3551
Facsimile (847) 551-9812

Great Lakes

Bosch Rexroth Corporation
2730 Research Drive
Rochester Hills, MI 48309
Telephone (248) 267-4000
Facsimile (248) 853-2033

Northeast

Bosch Rexroth Corporation
99 Rainbow Road
East Granby, CT 06026
Telephone (860) 844-8377
Facsimile (860) 844-8595

Bosch Rexroth Corporation
2315 City Line Road
Bethlehem, PA 18017-2131
Telephone (610) 694-8300
Facsimile (610) 694-8467

Southeast

Bosch Rexroth Corporation
14001 South Lake Drive
Charlotte, NC 28273
Telephone (800) 438-5983
Facsimile (704) 583-0523

Southwest

Bosch Rexroth Corporation
1520 Selene Drive, Suite 104
Carrollton, TX 75006
Telephone (972) 245-6718
Facsimile (972) 242-2850

West

Bosch Rexroth Corporation
7901 Stoneridge Drive, Suite 220
Pleasanton, CA 94588
Telephone (925) 227-1074
Facsimile (925) 227-1081

Bosch Rexroth Corporation
13766 Alton Parkway, Suite 147
Irvine, CA 92618-1622
Telephone (949) 609-1640
Facsimile (888) 873-3434

The data specified herein only serves to describe the product. No statements concerning a certain condition or suitability for a certain application can be derived from our information. The given information does not release the user from obligation of own judgment and verification. It must be remembered that our products are subject to a natural process of wear and aging.

©This document, as well as the data, specifications and other information set forth in it, are the exclusive property of Bosch Rexroth Corp. Without their consent it may not be reproduced or given to third parties.