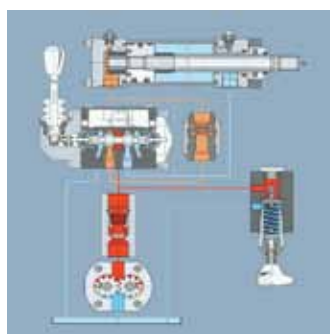


# Hydraulics Technical Training Schedule – 2012





# Table of Contents

---

## Hydraulics – United States and Canada

---

About our Classes . . . . . 4

---

Course Locations . . . . . 4

---

On-Site Training (U.S. only) . . . . . 5

---

## Courses Offered – United States and Canada

---

Principles of Hydraulics – POH . . . . . 7

---

Maintenance, Repair & Setup of (Industrial) Hydraulic Systems – MRS . . . . . 8

---

Mobile Hydraulics Technology – MHT . . . . . 9

---

Maintenance, Repair & Setup of (Mobile) Hydraulic Systems – MRSM . . . . . 10

---

Fundamentals and Servicing of Proportional Valves – FSP . . . . . 11

---

Pump Controls – Open Loop – PCO . . . . . 12

---

Pump Controls – Closed Loop – PCC . . . . . 13

---

Design Considerations for (Industrial) Hydraulics – DCH . . . . . 14

---

Design Considerations for (Mobile) Hydraulics – DCHM . . . . . 15

---

Proportional and Servo Circuit Design – PSD . . . . . 16

---

Electronic Controls for Hydraulic Systems – ECH . . . . . 17

---

Piston Pumps/Motors and Controls – PPM . . . . . 18

---

How to Register . . . . . 19

# About our Classes

Bosch Rexroth Corporation is committed to quality fluid power training. Based on this commitment, our Training Department has developed a series of courses that are meeting the training needs of industry. Our course offerings are targeted toward those individuals who maintain hydraulic systems and those who design new systems or want to upgrade existing systems with new technology.

On the maintenance side, we begin with the Principles of Hydraulics (POH) class, with six additional hands-on performance intensive courses. This will lead to a solid foundation in hydraulic principles and an effective working knowledge of maintenance concepts and practices. Our course material will cover information pertaining to systems maintenance, as well as current individual component repair, service, set-up and testing procedures.

The design and engineering side also begins with our Principles of Hydraulics, with as many as four more courses that will aid the engineering oriented person in the design of a system. These skills can be applied to new applications or the upgrading of an already existing system. This exposure will assist in the proper sizing and selection of valves, actuators, conductors, and drive units.

Remember, whether you are in maintenance or engineering, you can count on quality hydraulic training at any Bosch Rexroth Training Center you select.

## Locations



### United States

Bethlehem Area Vocational  
Technical School  
Bethlehem, Pennsylvania  
Pennsylvania (BAVTS)

### Canada

Bosch Rexroth Canada  
Burlington, Ontario  
Canada (ON)

Bosch Rexroth Canada  
Burnaby, British Columbia  
Canada (BC)

Bosch Rexroth Canada  
Edmonton, Alberta  
Canada (AB)

# On-Site and Regular Scheduled Classes

Reality based hydraulic training that will meet two different needs

## Which one is best for you?

### Scheduled Classes

Regularly scheduled classes in hydraulics technology offered at our training facilities (see this catalog for class types, locations and dates).

Custom machine specific and/or process specific hydraulic training at your facility based on your actual hydraulic operating equipment (call us at 610-694-8407 or e-mail us at [lois.maura@boschrexroth-us.com](mailto:lois.maura@boschrexroth-us.com) for information and a free proposal from a hydraulics specialist).

### On-Site Training

The need for training on specific hydraulic installations, both for new and existing equipment, is routinely accomplished through our on-site training programs. Last year we provided instruction to many students through various on-site training programs. With regard to new equipment installations, we have provided these on-site training seminars to train your employees in proper start-up and preventive maintenance procedures. The hydraulic circuit and control theory is also covered in detail.

Customized training programs are available with test stands delivered to your location. Analysis includes component function, calibration procedures, troubleshooting techniques and overall system operation.

On-site training does not have to be on capital equipment. We can also provide basic hydraulic training in addition to the maintenance/troubleshooting formats. To satisfy system engineers and designers, we also offer an on-site servo, proportional, or pump controls seminar at your facility.

We study the hydraulic and the electronic control circuitry of your machines, then a course outline is developed based upon the schematics and bills of material list you provide. These course outlines are designed to present a very methodical approach to system training.

As an integral part of on-site training, our textbooks are available for your on-site seminar and future reference. In addition to these textbooks is our complete library of data and parts sheets, which can be presented in a maintenance manual format on all components used on your machine. Slides, schematics, and other materials are available to promote customized training. The price for these seminars is quoted upon request with no obligation.

For further information, please contact our training coordinator, Lois Maura at (610) 694-8407, or send an e-mail to [lois.maura@boschrexroth-us.com](mailto:lois.maura@boschrexroth-us.com). In Canada, please call (905) 335-5511, or e-mail [training@boschrexroth.ca](mailto:training@boschrexroth.ca).

For faster service, please provide us with circuit schematics, bills of material, number of participants, location and whether any textbook is desired.



# Professional Advanced Training is Key to Success

Lifelong Learning means to undergo a lifelong development process that will never end; we have to learn continuously. Only those who have the required knowledge will be able to position themselves effectively in the long run. Societies have become more global; the number of potential competitors is growing constantly. In today's competition of the best, we have to compare and prove ourselves on a global basis. Apart from experience, openness towards innovation and positive thinking play a critical roll. Rexroth imparts first-hand knowledge and skills with competent teaching and training systems in line with practical needs, and offers the associated teaching and training materials – everything that safeguards your standing on a global market.



# Principles of Hydraulics – POH

Industrial and mobile hydraulic equipment maintenance personnel learn the principles of hydraulics

## What you will learn:

- ▶ Principles of fluid flow and pressure, work, power, actuator speed for industrial and mobile hydraulic systems
- ▶ Power consumed by hydraulic systems and why hydraulic systems get hot
- ▶ Hydraulic component symbols typically used in industrial and mobile systems
- ▶ Reading and interpreting basic industrial and mobile hydraulic schematics
- ▶ Function and use of pressure control valves
- ▶ Function and use of directional control valves commonly used in industrial and mobile hydraulic systems
- ▶ Load control and load holding techniques
- ▶ Types and operation of hydraulic pumps
- ▶ Characteristics of modern variable displacement pumps
- ▶ Setup of pressure regulating variable displacement pump controls
- ▶ Setup of adjustable hydraulic components used in industrial and mobile hydraulic systems
- ▶ 10 fundamental circuits most often used in industrial and mobile hydraulic systems
- ▶ How flow controls work to control actuator speed
- ▶ Using a variable displacement pump to control actuator speed in mobile hydraulic systems
- ▶ Function and operation of cylinders and hydraulic motors
- ▶ Function and use of a valve's "X" and "Y" ports
- ▶ Introduction to fluid cleanliness and filtration
- ▶ Introduction to electro-proportional hydraulic valves
- ▶ Knowledge reinforcement with hands-on lab exercises

This is a 1st level hydraulics training course for both industrial and mobile hydraulic equipment maintenance personnel. This training course is recommended for those who are new to hydraulically powered and controlled machines and equipment and for those who have had no prior formal training in hydraulics technology. This training course is also highly recommended for plant engineering personnel and mobile equipment engineering personnel who are tasked with hydraulic system improvement, system modifications and system design. Principles of Hydraulics was developed with the idea that hydraulic systems are best understood and that hydraulic system problems are more efficiently resolved by those who understand the physical principles that apply to industrial and mobile hydraulics.

**Prerequisites:** Proficiency in reading and math

Approximately 50% lecture and 50% hands-on lab

**Tuition:** \$1,700.00 (includes seminar fee, all student materials, textbook, daily lunch & refreshments)

## Available Dates & Locations for this Five-Day Class

Jan 16–20, 2012	Canada (ON)
Jan 23–27, 2012	BAVTS (PA)
Feb 13–17, 2012	BAVTS (PA)
Feb 27–Mar 2, 2012	Canada (AB)
Mar 12–16, 2012	BAVTS (PA)
Mar 26–30, 2012	Canada (BC)
Apr 16–20, 2012	BAVTS (PA)
May 14–18, 2012	BAVTS (PA)
Jun 11–15, 2012	BAVTS (PA)
Jul 16–20, 2012	BAVTS (PA)
Aug 13–17, 2012	BAVTS (PA)
Sep 10–14, 2012	BAVTS (PA)
Sep 24–28, 2012	Canada (ON)
Oct 8–12, 2012	BAVTS (PA)
Nov 12–16, 2012	BAVTS (PA)
Dec 3–7, 2012	BAVTS (PA)

**For Canadian Enrollment:**

**Call: (905) 335-5511**

**e-mail: [training@boschrexroth.ca](mailto:training@boschrexroth.ca)**

# Maintenance, Repair & Setup of Industrial Hydraulic Systems – MRS

Maintenance personnel learn proper methods of maintenance and troubleshooting

## What you will learn:

- ▶ Logical schematic reading and schematic interpretation
- ▶ Why hydraulic systems get hot and what to do about excess heat
- ▶ Hydraulic fluid cleanliness and condition standards
- ▶ Understanding relief valves – disassembly, inspection, assembly, testing
- ▶ Understanding pressure reducing valves – disassembly, inspection, assembly, testing
- ▶ Understanding directional control valves – disassembly, inspection, assembly, testing
- ▶ Understanding the various forms of hydraulic related shock and problems it causes
- ▶ External fluid leaks and how to eliminate them
- ▶ Directional control pilot chokes – slow shift directional control valves
- ▶ Controlling pilot pressure with pilot operated directional control valves
- ▶ Troubleshooting exercises to develop efficient hydraulic diagnostic skills
- ▶ Understanding variable displacement pumps – understanding pump pressure type pump controls
- ▶ Pump replacement, commissioning and control setup
- ▶ Review fundamental hydraulic circuits used in most hydraulic systems – operation and setup
- ▶ Knowledge reinforcement with hands-on lab exercises

## Available Dates & Locations for this Five-Day Class

Jan 30–Feb 3, 2012	BAVTS (PA)
Jan 30–Feb 3, 2012	Canada (ON)
Mar 5–9, 2012	BAVTS (PA)
May 28–Jun 1, 2012	Canada (AB)
Jun 18–22, 2012	BAVTS (PA)
Sep 24–28, 2012	BAVTS (PA)
Oct 22–26, 2012	Canada (ON)
Nov 5–9, 2012	BAVTS (PA)
Nov 5–9, 2012	Canada (BC)

This is a 2nd level industrial hydraulics training course developed for the maintenance technician. This training course is a logical next-step seminar after POH for your understanding of industrial hydraulics. It is recommended for plant maintenance personnel who have responsibility for the proper upkeep of industrial systems. Students work in the classroom and in the lab to develop their hydraulic component and circuit understanding. This seminar will address methods for correcting some hydraulic shock related problems and the elimination of external leakage problems.

**Prerequisites:** POH or prior formal industrial hydraulics technology training required for enrollment in MRS

More than 50% lab and student work exercises

**Tuition:** \$1,700.00 (includes seminar fee, all student materials, text book, daily lunch & refreshments)

**For Canadian Enrollment:**

**Call: (905) 335-5511**

**e-mail: [training@boschrexroth.ca](mailto:training@boschrexroth.ca)**

# Mobile Hydraulic Technology – MHT

Mobile maintenance technicians and mobile hydraulic system designers will develop their understanding of specific components and circuits used in mobile equipment

## What you will learn:

- ▶ Overview of hydraulic components and circuits used on mobile equipment
- ▶ Review of the principles of hydraulic fluid flow, fluid pressure, power and speed control
- ▶ Mobile hydraulic system efficiency and heat generation
- ▶ Hydraulic component schematic symbols
- ▶ Reading and interpreting mobile hydraulic schematics
- ▶ Open and closed loop pumping systems for transmitting fluid energy
- ▶ Understanding hydraulic cylinders and hydraulic motors
- ▶ Load control and load holding valves and techniques – braking valves
- ▶ Pressure relief valves for system pressure control, cylinder port reliefs and hydraulic motor cross port reliefs
- ▶ The application of pressure reducing valves with mobile hydraulic systems
- ▶ Mobile modular directional controls and various types of valve operators
- ▶ Load sensing/compensation as separate control circuits or as integrated into mobile modular directional controls
- ▶ Flow dividing
- ▶ High pressure hydraulic hose types and sizing information – other types of fluid conductors
- ▶ Hydraulic fluids and fluid maintenance

## Available Dates & Locations for this Five-Day Class

Feb 6–10, 2012      BAVTS (PA)

This training course provides fundamental and necessary information on hydraulic principles as these principles are applied and implemented in mobile hydraulic powered and controlled machinery. While there are many similarities to industrial and stationary hydraulic systems there are also many differences with how hydraulics is applied in mobile machinery. The hydraulic components and methods used in mobile equipment will be the specific emphasis of this training course.

**Prerequisites:** Proficiency in reading and math

Classroom lecture and hands-on lab exercises

**Tuition:** \$1,700.00 (includes seminar fee, all student materials, text book, daily lunch & refreshments)

# Maintenance, Repair & Setup of Mobile Hydraulic Systems – MRSM

Mobile hydraulic maintenance personnel learn proper methods of maintenance and troubleshooting

## What you will learn:

- ▶ Review of hydraulic principles as these principles relate to mobile hydraulics technology
- ▶ Hydraulic cylinders – operation and troubleshooting
- ▶ Understanding fixed displacement and variable displacement hydraulic motors
- ▶ Operation and setup of popular variable displacement hydraulic motor controls
- ▶ Pressure relief valves for system pressure control, port relief valves for cylinders and crossport relief valves for hydraulic motors – operation and setup
- ▶ Directional control valves – standard spool valves and mobile modular directional control valves – understanding the operation and the application of different types of spools
- ▶ Load sensing as separate control circuits and load compensation incorporated into mobile type directional control valves
- ▶ Load control and load holding techniques – operation and setup
- ▶ Understanding popular open loop pumps and closed loop pumps
- ▶ Displacement type pump controls – operation and setup
- ▶ Flow dividers
- ▶ Fluid conductors – types, sizing and selection – hose and pressure rated tube
- ▶ Fluid cleanliness and condition
- ▶ Filtration – tank breathers and fluid filters

## Available Dates & Locations for this Five-Day Class

Mar 26–30, 2012	BAVTS (PA)
Jun 18–22, 2012	Canada (AB)
Nov 19–23, 2012	Canada (ON)

This is a 2nd level mobile hydraulics training course developed for the mobile maintenance technician. This training course is a logical next-step seminar after either the POH seminar or the MHT seminar for your understanding of mobile equipment hydraulic systems. It is recommended for mobile maintenance personnel who have responsibility for the proper upkeep of mobile systems. Students work in the classroom and in the lab to develop their hydraulic component and circuit understanding.

**Prerequisites:** POH or MHT or equivalent training and knowledge

Approximately 50% lecture and 50% lab exercises

**Tuition:** \$1,700.00 (includes seminar fee, all student materials, text book, daily lunch & refreshments)

**For Canadian Enrollment:**

**Call: (905) 335-5511**

**e-mail: [training@boschrexroth.ca](mailto:training@boschrexroth.ca)**

# Fundamentals & Servicing of Proportional Valves – FSP

Plant maintenance personnel of all levels learn the function & operation of electro-proportional hydraulic valves and their interface electronic amplifiers – recommended for the mechanical trades and the electrical trades

## What you will learn:

- ▶ Understand the similarities between standard (fixed voltage solenoid, spool type) directional control valves and electro-proportional directional control valves
- ▶ Understand the principles of speed control (throttle valve principle)
- ▶ Compare and contrast force controlled and stroke controlled solenoids as applied to electro-proportional valves
- ▶ The control of actuator direction, speed, acceleration/deceleration with proportional valves
- ▶ Ideas of proper proportional directional control valve sizing
- ▶ Understanding electro-proportional pressure control valves
- ▶ Compare and contrast spool position feedback proportional valves verses non-spool position feedback valves
- ▶ Standard proportional directional control valves
- ▶ High performance and servo solenoid proportional directional control valves
- ▶ Proportional flow control valves
- ▶ Electronic interface amplifiers that are used to drive proportional valves
- ▶ Integrated electronics/on-board electronics valves
- ▶ Rexroth branded and Bosch branded proportional valves
- ▶ Troubleshooting proportional valve systems and isolate problems

## Available Dates & Locations for this Five-Day Class

Apr 23–27, 2012	BAVTS (PA)
Oct 15–19, 2012	BAVTS (PA)

Electro-proportional hydraulic valves have become a main stream component in most hydraulic powered and controlled machines and processes. These valves are an active part of the process control system. It is important that mechanical and electrical maintenance personnel develop a thorough understanding of how these valves are applied and how they operate. For this purpose there will be ample time devoted to the disassembly, inspection and assembly of several valve types. Students will configure the electronic interface amplifier and put the proportional valve in a hydraulic circuit to observe the operation. Through this hands-on approach, students will develop their setup and troubleshooting skills. This 5-day training course is also a proper starting point for plant engineering personnel prior to their attendance in our advanced PSD course.

**Prerequisites:** POH or prior formal industrial hydraulics technology training required for enrollment in FSP

Approximately 50% lecture and 50% hands-on lab exercises

**Tuition:** \$1,800.00 (includes seminar fee, all student materials, text book, daily lunch & refreshments)

# Pump and Controls, Open Loop – PCO

Advanced maintenance technicians and hydraulic system designers develop their knowledge of popular variable displacement pumps and pump controls used in open loop pumping systems

## What you will learn:

- ▶ Types and characteristics of variable displacement pumps
- ▶ Types and characteristics of open loop pump controls including proportional controls for pumps
- ▶ Sizing pumps to meet the flow requirements and pressure requirements of the hydraulic system
- ▶ How to interpret pump technical data sheets to understand pump characteristics and pump control operation
- ▶ Pump suction inlet condition requirements and calculations
- ▶ Pump case drain pressure
- ▶ Applying pumps with through-drives and quantifying the shaft torque and bending moment values comparing them to maximum values to the selected pump
- ▶ Understanding how adverse operating conditions can limit pump life – fluid temperature, viscosity, cleanliness – the use of fluids other than standard mineral type fluids
- ▶ Pump commissioning – pump operation troubleshooting
- ▶ Set-up of pump controls

## Available Dates & Locations for this Five-Day Class

May 7–11, 2012	BAVTS (PA)
Aug 6–10, 2012	BAVTS (PA)

This 5-day training course develops the student's knowledge of the internal operation of popular variable displacement pumps and the operation/setup of various pump controls. Maintenance technicians can use the information presented during this seminar to insure pump performance and to provide good pump life. Engineering personnel develop their knowledge of proper pump/pump control selection and pump sizing. Students disassemble variable displacement piston pumps to reinforce their understanding of pump operation. Students will operate and setup the assembled pump.

**Prerequisites:** POH and MRS or equivalent knowledge

Classroom lecture, discussion, lab exercises/lab demonstrations and student work problems

**Tuition:** \$1,800.00 (includes seminar fee, all student materials, text book, daily lunch & refreshments)

# Pump and Controls, Closed Loop – PCC

Advanced maintenance technicians and hydraulic system designers develop their knowledge of popular variable displacement pumps and pump controls used in closed loop pumping systems

## What you will learn:

- ▶ Types and characteristics of variable displacement pumps
- ▶ Types and characteristics of closed loop pump controls including proportional controls for pumps
- ▶ Sizing pumps to meet the flow requirements and pressure requirements of the hydraulic system
- ▶ How to interpret pump technical data sheets to understand pump characteristics and pump control operation for closed loop pumping systems
- ▶ Troubleshooting, setup, commissioning of closed loop pump systems
- ▶ Pump case drain pressure
- ▶ Understanding fixed and variable displacement hydraulic motors used in closed loop pumping systems
- ▶ Understanding how adverse operating conditions can limit pump life – fluid temperature, viscosity, cleanliness – the use of fluids other than standard mineral type fluids
- ▶ Pump commissioning – pump operation troubleshooting
- ▶ Setup of pump controls

## Available Dates & Locations for this Five-Day Class

Aug 27–31, 2012      BAVTS (PA)

This 5-day training course develops the student's knowledge of the internal operation of popular variable displacement pumps and the operation/setup of various pump controls. Maintenance technicians can use the information presented during this seminar to insure pump performance and to provide good pump life. Engineering personnel develop their knowledge of proper pump/pump control selection and pump sizing. Students disassemble variable displacement piston pumps to reinforce their understanding of pump operation. Students will operate and setup the assembled pump.

**Prerequisites:** POH and MRS or equivalent knowledge

Classroom lecture, discussion, lab exercises/lab demonstrations and student work problems

**Tuition:** \$1,800.00 (includes seminar fee, all student materials, text book, daily lunch & refreshments)

# Design Considerations for Industrial Hydraulic Systems – DCH

Advanced maintenance technicians and hydraulic project engineers learn to properly select hydraulic components that will produce efficient hydraulic circuits and hydraulic circuits that properly control the machine or process.

## What you will learn:

- ▶ The concepts of “fast” and “slow” hydraulic systems
- ▶ The principles of speed control (throttle valve speed control systems)
- ▶ The proper use of energy (power) in a hydraulic system to achieve optimal performance
- ▶ The use of energy (power) in a hydraulic system to achieve optimal efficiency
- ▶ Hydraulic valve performance characteristics through proper interpretation of valve catalog data
- ▶ Sizing of hydraulic valves through proper interpretation of valve catalog data
- ▶ Calculation of pressure requirements – calculation of actuator and total system flow requirements
- ▶ Calculation of system power requirements
- ▶ The proper control of pressure spikes and hydraulic related shock
- ▶ Evaluating the load and calculate the reflected mass at the hydraulic actuator
- ▶ Analyze the static and dynamic load requirements and convert these calculations to pressure, flow rates and a possible hydraulic control circuit type
- ▶ Concepts of minimum acceptable acceleration and deceleration times
- ▶ Introduction to the use and calculation of natural frequency
- ▶ Considerations of appropriate pump systems

## Available Dates & Locations for this Five-Day Class

Apr 16–20, 2012	Canada (ON)
Jun 25–29, 2012	BAVTS (PA)

This 5-day training course is a must for plant personnel tasked with hydraulic system improvement or with the development of initial design concepts for a new hydraulic application. Students receive the tools they need to properly evaluate the load to be moved and controlled and to select appropriate hydraulic valves for this purpose. Classroom lecture and discussion will be balanced with various system component selection and sizing problems.

**Note:** Students are required to bring calculators to this training course

**Prerequisites:** Students will gain admittance to DCH only after their successful completion of the Bosch Rexroth POH seminar. Students must have the ability to manipulate and transpose various hydraulic related algebraic equations.

Classroom lecture, discussion and student work problems

**Tuition:** \$1,800.00 (includes seminar fee, all student materials, text book, daily lunch & refreshments)

**For Canadian Enrollment:**

**Call: (905) 335-5511**

**e-mail: [training@boschrexroth.ca](mailto:training@boschrexroth.ca)**

# Design Considerations for Mobile Hydraulic Systems – DCHM

Advanced maintenance technicians and hydraulic project engineers learn to properly select hydraulic components that will produce efficient hydraulic circuits that properly control mobile equipment

## What you will learn:

- ▶ Review of hydraulic principles – calculation of required pressure, required flow and required power
- ▶ Hydraulic actuator (cylinder or motor) speed control – throttle valve principle or displacement controlling pumps
- ▶ Open pump loop versus closed pump loop with displacement controlled pumps
- ▶ Selection of relief valves for system pressure control, cylinder port relief, motor cross port relief applications. Selection and sizing of pressure reducing valves. Selection and sizing of standard directional control valves and mobile modular directional control valves of various spool types
- ▶ The use of hydraulic proportional directional controls with reducing type joy pilot control units (foot pedal and joy stick)
- ▶ Load sensing/compensation type directional controls
- ▶ Flow dividers for unequal loads on multiple actuators
- ▶ Directional control valve circuits
- ▶ The operation and possible requirement for load holding and load control - circuits
- ▶ Pressure controlled variable displacement open loop pumps operation, application/selection and sizing
- ▶ Displacement controlled pumps in open pump loop operation, application/selection and sizing
- ▶ Displacement controlled pumps in closed pump loop operation (hydrostatic drive) with hydraulic motors
- ▶ Application and sizing of fixed displacement and variable displacement hydraulic motors
- ▶ Student sizing and selection work problems
- ▶ Fluid conductor sizing – the proper use of pressure rated hose and other fluid conductors
- ▶ The use of energy (power) in a hydraulic system to achieve optimal efficiency
- ▶ Hydraulic valve performance characteristics through proper interpretation of valve catalog data
- ▶ Sizing of hydraulic valves through proper interpretation of valve catalog data
- ▶ Calculation of pressure requirements – calculation of actuator and total system flow requirements
- ▶ Calculation of system power requirements

This 5-day training course is a must for mobile hydraulics technicians and engineers tasked with hydraulic system improvement or with the development of initial design concepts for a new mobile hydraulic application. Students receive the tools they need to properly evaluate the load to be moved and controlled and to select appropriate hydraulic valves for this purpose. Classroom lecture and discussion will be balanced with various system component selection and sizing problems for various mobile hydraulic systems.

**Note:** Students are required to bring calculators to this training course

**Prerequisites:** Students will gain admittance to DCHM only after their successful completion of the Bosch Rexroth POH seminar. Students must have the ability to manipulate and transpose various hydraulic related algebraic equations.

Classroom lecture, discussion and student work problems

**Tuition:** \$1,800.00 (includes seminar fee, all student materials, text book, daily lunch & refreshments)

## Available Dates & Locations for this Five-Day Class

Oct 29– Nov 2, 2012    BAVTS (PA)

# Proportional & Servo Circuit Design – PSD

Engineering personnel and hydraulic project engineers who are responsible for the implementation and design of proportional valve and servo valve circuitry will develop the design concepts they need for the proper application of components to achieve good control of a hydraulic axis

## What you will learn:

- ▶ Proportional valve and servo valve selection & sizing criteria
- ▶ Selecting the appropriate valve for the application
- ▶ Valve frequency of response and valve stepped response applied
- ▶ Proportional and servo valve circuit design concepts
- ▶ Proper control of pressure, speed, acceleration/deceleration and limiting hydraulic related shock
- ▶ Understanding the nature of a spring mass system
- ▶ Open process loop versus closed process loop to achieve proper control
- ▶ Evaluating the load's reflected mass at the actuator
- ▶ Natural frequency calculations for hydraulic cylinders and hydraulic motors

## Available Dates & Locations for this Five-Day Class

Jul 30–Aug 3, 2012      BAVTS (PA)

This 5-day training course develops design concepts with the proper application of proportional and servo valves. Engineering personnel learn to properly select and size a proportional or servo valve. This is an appropriate next-step training course after completion of our DCH course

**Prerequisites:** DCH course or equivalent – ability to manipulate algebraic equations

Classroom lecture, discussion, lab exercises/lab demonstrations and student work problems

**Tuition:** \$1,800.00 (includes seminar fee, all student materials, text book, daily lunch & refreshments)

# Electronic Controls for Hydraulic Systems – ECH

Advanced plant maintenance technicians, hydraulic system designers and controls engineers develop their knowledge of the electronic control of electro-proportional hydraulic valves used in closed process loop systems

## What you will learn:

- ▶ Advantages and disadvantages of 3 closed loop control concepts
- ▶ Analog closed process loop control
- ▶ Understand the nature of digital controller platforms
- ▶ Digital closed loop control with analog process feedback
- ▶ Digital closed loop control with digital process feedback
- ▶ Develop understanding of the Bosch Rexroth DMX digital controller
- ▶ Develop understanding of the Bosch Rexroth HACD digital controller (major emphasis)
- ▶ Operation, setup/programming, and loop tuning of the DMX and the HACD controllers
- ▶ Selection and application of closed loop controllers using technical data sheets and operation and setup documentation

## Available Dates & Locations for this Five-Day Class

Sep 17–21, 2012      BAVTS (PA)

This 5-day training course develops the student's knowledge of the internal operation and setup of the electronics used for hydraulic closed process controls that are used to drive proportional and servo valves. Hydraulic system designers and controls engineers can use the information presented in this training course to define the application requirements and to select, setup and tune the appropriate closed loop controller. Students learn the potential and limits of hydraulic axis control using closed loop controllers.

**Note:** Students are encouraged to bring their lap top computers

**Prerequisites:** PSD or equivalent knowledge

Classroom lecture, discussion, lab exercises/lab demonstrations and student work problems

**Tuition:** \$1,800.00 (includes seminar fee, all student materials, text book, daily lunch & refreshments)

# Piston Pumps/Motors and Controls – PPM

Advanced plant maintenance technicians and hydraulic system designers develop their knowledge of popular fixed and variable displacement piston pumps/motors and controls used in open loop, closed loop and semi-closed loop hydraulic systems

## What you will learn:

- ▶ Types and characteristics of fixed and variable displacement piston pumps and motors
- ▶ Circuit selection criteria for open loop, closed loop or semi-closed loop circuits
- ▶ Types and characteristics of open and closed loop pump controls including both hydraulic and electronic pressure and displacement controllers.
- ▶ Sizing pumps to meet the flow requirements and pressure requirements of the hydraulic system
- ▶ Sizing motors to meet the mechanical speed and torque requirements of the machine
- ▶ Open loop pump suction, inlet and case drain condition requirements and calculations
- ▶ Hydraulic fluid cleanliness and condition requirements for axial piston pumps and motors
- ▶ Pump and motor commissioning, setup, control adjustment and troubleshooting

## Available Dates & Locations for this Five-Day Class

May 7–11, 2012

Canada (ON)

This 5-day training course develops the student's knowledge of the internal operation of popular fixed and variable displacement piston pumps and motors and the operation /setup of various controllers. Maintenance technicians can use the information presented to insure pump performance and to provide good pump life. Engineering personnel develop their knowledge of proper pump/motor control selection and sizing.

**Prerequisites:** POH and MRS/DCH or equivalent knowledge

classroom lecture, discussions, laboratory exercises and lab demonstrations

**Tuition:** \$1,800.00 (includes seminar fee, all student materials, text book, daily lunch & refreshments)

**For Canadian Enrollment:**

**Call: (905) 335-5511**

**e-mail: [training@boschrexroth.ca](mailto:training@boschrexroth.ca)**

# Hydraulic Course Registration – U.S. Only

**Registration Information** – To determine space availability, please call or e-mail our training coordinator, Lois Maura at (610) 694-8407 or lois.maura@boschrexroth-us.com. Once registered, you will receive a confirmation which includes tuition payment information, class hours, suggested hotels, and a map with directions.

**Payment Information** – Tuition may be paid with a Visa, MasterCard, or American Express credit card. Credit Cards will be charged two weeks prior to class. If issuing a check, make check payable to Bosch Rexroth Corporation and

referencing ACCT. US00706. Checks must be received **prior to** the first day of class.

For payments by check, please send to:

**Bosch Rexroth Corporation**  
**33920 Treasury Center**  
**Chicago, IL 60694**

**Cancellation Guidelines** – Any student or company cancelling within 2 weeks (14 days) of the start of class will be responsible for 50% of the tuition fee.

<p><b>4 Ways to Register for U.S. Courses:</b></p> <ul style="list-style-type: none"> <li>▶ <b>Phone</b> <b>(610) 694-8407</b></li> <li>▶ <b>E-mail</b> <b>lois.maura@boschrexroth-us.com</b></li> <li>▶ <b>Fax</b> <b>(610) 694-8266</b></li> <li>▶ <b>Mail</b> <b>Bosch Rexroth Corp.</b> <b>Training Dept.</b> <b>Attn.: Lois Maura</b> <b>P.O. Box 25407</b> <b>Lehigh Valley, PA</b> <b>18002-5407</b></li> </ul>	<p>I wish to enroll in the following courses:</p> <table border="0"> <tr> <td style="width: 10%;">POH</td> <td style="width: 5%;"><input type="checkbox"/></td> <td style="width: 60%;">Principles of Hydraulics</td> <td style="width: 15%; text-align: right;">\$1,700</td> <td style="width: 10%;">Dates of class: _____</td> </tr> <tr> <td>MRS</td> <td><input type="checkbox"/></td> <td>Maintenance, Repair, &amp; Set-up of Industrial Hydraulics</td> <td style="text-align: right;">\$1,700</td> <td>_____</td> </tr> <tr> <td>MHT</td> <td><input type="checkbox"/></td> <td>Mobile Hydraulic Technology</td> <td style="text-align: right;">\$1,700</td> <td>_____</td> </tr> <tr> <td>MRSM</td> <td><input type="checkbox"/></td> <td>Maintenance, Repair, &amp; Set-up of Mobile Hydraulics</td> <td style="text-align: right;">\$1,700</td> <td>_____</td> </tr> <tr> <td>FSP</td> <td><input type="checkbox"/></td> <td>Fundamentals &amp; Servicing of Proportional Valves</td> <td style="text-align: right;">\$1,800</td> <td>_____</td> </tr> <tr> <td>PCO</td> <td><input type="checkbox"/></td> <td>Pump &amp; Controls - Open Loop</td> <td style="text-align: right;">\$1,800</td> <td>_____</td> </tr> <tr> <td>PCC</td> <td><input type="checkbox"/></td> <td>Pump &amp; Controls - Closed Loop</td> <td style="text-align: right;">\$1,800</td> <td>_____</td> </tr> <tr> <td>DCH</td> <td><input type="checkbox"/></td> <td>Design Considerations for Industrial Hydraulics</td> <td style="text-align: right;">\$1,800</td> <td>_____</td> </tr> <tr> <td>DCHM</td> <td><input type="checkbox"/></td> <td>Design Considerations for Mobile Hydraulics</td> <td style="text-align: right;">\$1,800</td> <td>_____</td> </tr> <tr> <td>PSD</td> <td><input type="checkbox"/></td> <td>Proportional &amp; Servo Circuit Design</td> <td style="text-align: right;">\$1,800</td> <td>_____</td> </tr> <tr> <td>ECH</td> <td><input type="checkbox"/></td> <td>Electronic Controls for Hydraulic Systems</td> <td style="text-align: right;">\$1,800</td> <td>_____</td> </tr> </table>	POH	<input type="checkbox"/>	Principles of Hydraulics	\$1,700	Dates of class: _____	MRS	<input type="checkbox"/>	Maintenance, Repair, & Set-up of Industrial Hydraulics	\$1,700	_____	MHT	<input type="checkbox"/>	Mobile Hydraulic Technology	\$1,700	_____	MRSM	<input type="checkbox"/>	Maintenance, Repair, & Set-up of Mobile Hydraulics	\$1,700	_____	FSP	<input type="checkbox"/>	Fundamentals & Servicing of Proportional Valves	\$1,800	_____	PCO	<input type="checkbox"/>	Pump & Controls - Open Loop	\$1,800	_____	PCC	<input type="checkbox"/>	Pump & Controls - Closed Loop	\$1,800	_____	DCH	<input type="checkbox"/>	Design Considerations for Industrial Hydraulics	\$1,800	_____	DCHM	<input type="checkbox"/>	Design Considerations for Mobile Hydraulics	\$1,800	_____	PSD	<input type="checkbox"/>	Proportional & Servo Circuit Design	\$1,800	_____	ECH	<input type="checkbox"/>	Electronic Controls for Hydraulic Systems	\$1,800	_____
POH	<input type="checkbox"/>	Principles of Hydraulics	\$1,700	Dates of class: _____																																																				
MRS	<input type="checkbox"/>	Maintenance, Repair, & Set-up of Industrial Hydraulics	\$1,700	_____																																																				
MHT	<input type="checkbox"/>	Mobile Hydraulic Technology	\$1,700	_____																																																				
MRSM	<input type="checkbox"/>	Maintenance, Repair, & Set-up of Mobile Hydraulics	\$1,700	_____																																																				
FSP	<input type="checkbox"/>	Fundamentals & Servicing of Proportional Valves	\$1,800	_____																																																				
PCO	<input type="checkbox"/>	Pump & Controls - Open Loop	\$1,800	_____																																																				
PCC	<input type="checkbox"/>	Pump & Controls - Closed Loop	\$1,800	_____																																																				
DCH	<input type="checkbox"/>	Design Considerations for Industrial Hydraulics	\$1,800	_____																																																				
DCHM	<input type="checkbox"/>	Design Considerations for Mobile Hydraulics	\$1,800	_____																																																				
PSD	<input type="checkbox"/>	Proportional & Servo Circuit Design	\$1,800	_____																																																				
ECH	<input type="checkbox"/>	Electronic Controls for Hydraulic Systems	\$1,800	_____																																																				

**Participant Information:**

Name	Title	
E-mail		
Company Name		
Company Address		
City	State	Zip
Business Phone	Fax (if applicable)	

**Payment Information:**

▶ **Important Reminder: Tuition is due two weeks prior to class. Check payments must be received prior to the first day of class.**

I will call with my credit card information.

Charge to:     Mastercard     Visa     AmEx

Card Number	Verification Code
Name on Card	Expiration Date

Check, remit to address at top of page

Check Number	Amount
--------------	--------

**Bosch Rexroth Corporation**

Hydraulics  
2315 City Line Road  
Bethlehem, PA 18017-2131  
Telephone (610) 694-8300  
Facsimile (610) 694-8467  
[www.boschrexroth-us.com](http://www.boschrexroth-us.com)

**USA**

Bosch Rexroth Corporation  
Corporate Headquarters  
5150 Prairie Stone Parkway  
Hoffman Estates, IL 60192-3707  
Telephone (847) 645-3600  
Facsimile (847) 645-6201

Bosch Rexroth Corporation  
Electric Drives and Controls  
5150 Prairie Stone Parkway  
Hoffman Estates, IL 60192-3707  
Telephone (847) 645-3600  
Facsimile (847) 645-6201

Bosch Rexroth Corporation  
Linear Motion and  
Assembly Technologies  
14001 South Lakes Drive  
Charlotte, NC 28273  
Telephone (800) 438-5983  
Facsimile (704) 583-0523

Bosch Rexroth Corporation  
Pneumatics  
1953 Mercer Road  
Lexington, KY 40511-1021  
Telephone (859) 254-8031  
Facsimile (859) 281-3491

Bosch Rexroth Corporation  
Häggglunds Drives  
2275 International Street  
Columbus, OH 43228  
Telephone (614) 527-7450  
Facsimile (614) 527-7401