

Section 9 Compact Sandwich

RA 09 907/07.04

The Drive & Control Company

Compact Sandwich Features

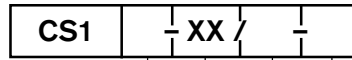
- Aluminum and ductile iron
- SAE, BSPP, or NPT porting



Section 9 Index

Description	Page
D03 with T-162A Cavity	101
D03 with T-13A Cavity	102

Compact Sandwich T-162A Cavity, D03 (Size 6)



Circuit
 P to T
 A to T
 B to T
 A, B to T

= 1
 = 2
 = 3
 = 4

Revision

= XX

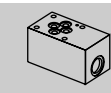
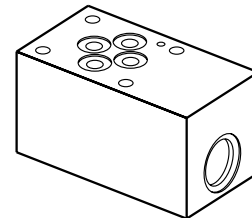
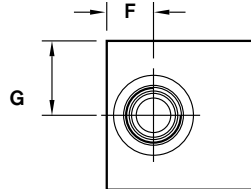
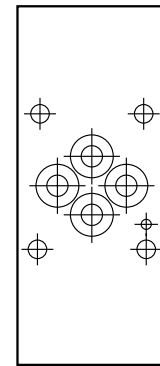
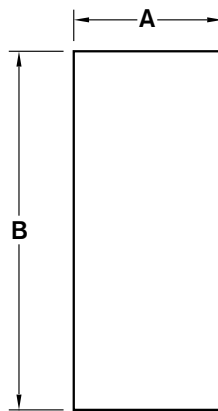
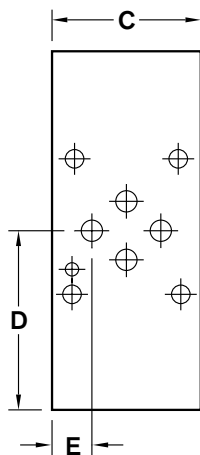
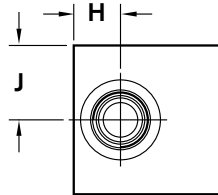
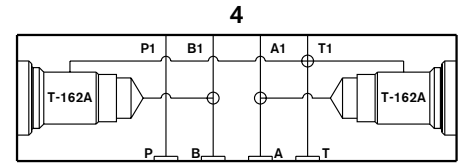
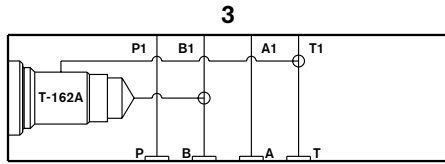
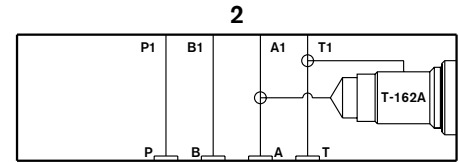
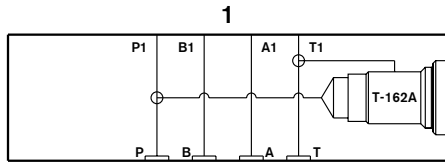
A =
 D =

12 =

Ports
 SAE

Material

Aluminum 6061-T6, 3000 psi
 Ductile Iron¹ 65-45-12, 5000 psi



Dimension	A	B	C	D	E	F	G	H	J
CS21...	1.75	3.75	1.75	2.36	0.47	0.55	0.88	—	—
CS22...	1.75	3.25	1.75	1.14	0.47	—	—	0.55	0.88
CS23...	1.75	3.25	1.75	2.11	0.47	0.55	0.88	—	—
CS24...	1.75	4.22	1.75	2.11	0.47	0.55	0.88	0.55	0.88

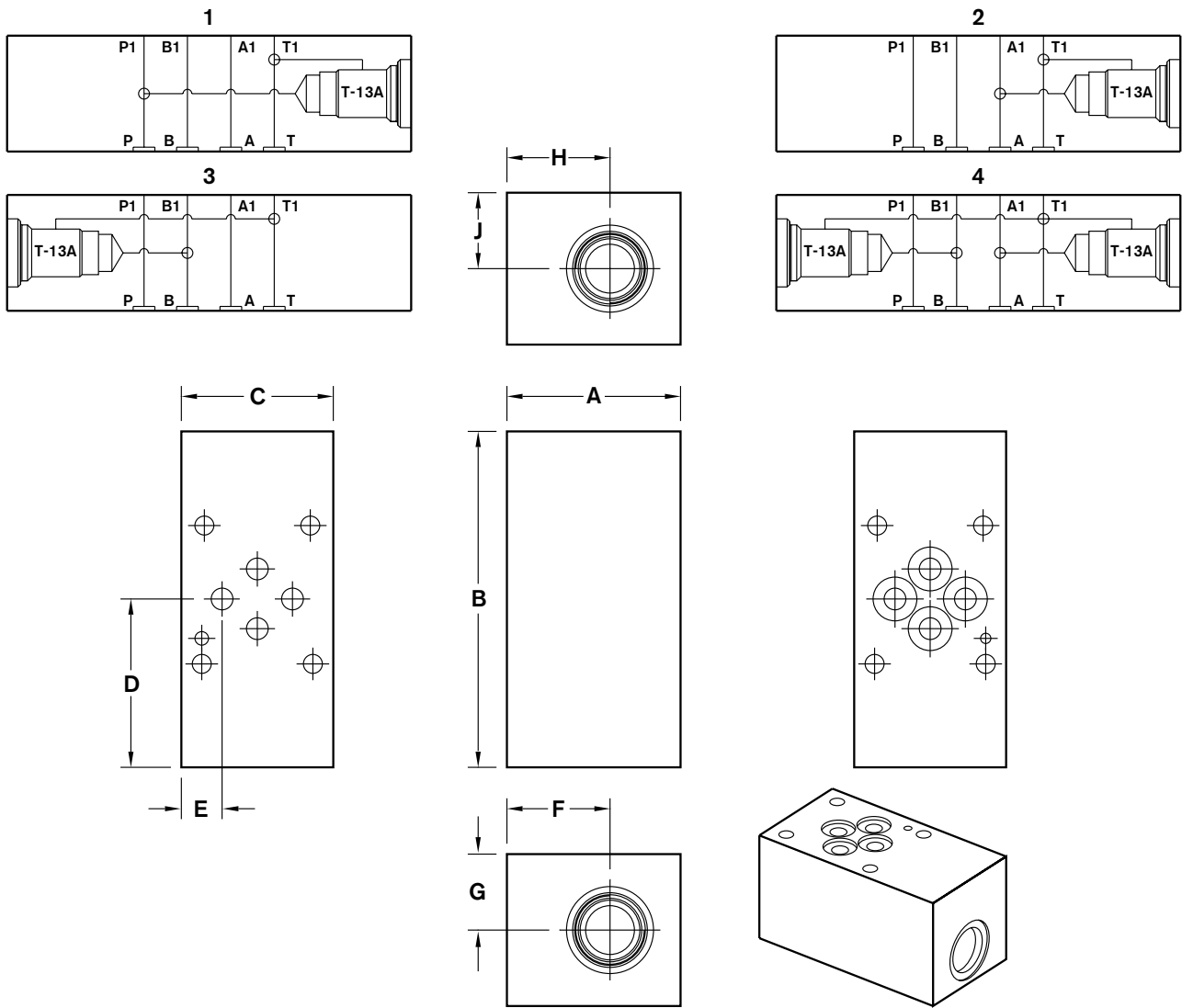
Mounting hardware is NOT supplied.

1) Blackening

All dimensions in inches

Compact Sandwich T-13A Cavity, D03 (Size 6)

Circuit P to T A to T B to T A, B to T	= 1 = 2 = 3 = 4	CS2 / XX /				Ports SAE
Revision	= XX					Material Aluminum 6061-T6, 3000 psi Ductile Iron ¹ 65-45-12, 5000 psi



Dimension	A	B	C	D	E	F	G	H	J
CS21...	2.00	3.87	1.75	2.56	0.47	1.19	0.88	—	—
CS22...	2.00	3.13	1.75	1.19	0.47	—	—	1.19	0.88
CS23...	2.00	3.13	1.75	1.94	0.47	1.19	0.88	—	—
CS24...	2.00	3.87	1.75	1.94	0.47	1.19	0.88	1.19	0.88

Mounting hardware is NOT supplied.

1) Blackening

All dimensions in inches