

Pneumatic Technology Training Program (LexP/SIS1)



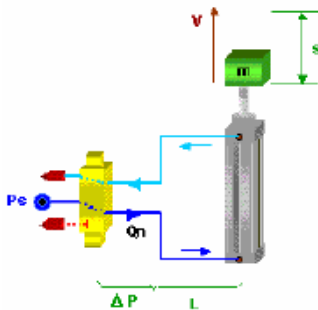
*"An investment in knowledge
always pays the best interest".*
Benjamin Franklin

**Seminars conducted by Professional
Instructors with state-of-the-art
didactic equipment**

**Emphasizes hands-on re-enforcement
of fundamental principles**

**Seminars conducted at Bosch Rexroth
Detroit Technical Center**

**Seminars developed as complete set
of integrated modules with Bosch
Rexroth Academy**



Contact

Thomas Dwyer (LexP/SIS)
Direct Tel: (248) 267 4082
Direct Fax: (248) 853 2045
thomas.dwyer@boschrexroth-us.com

Course progression chart

Basic Pneumatic Technology (2 days):

This course covers fundamental principals of pneumatics, standard component types and operation, and schematic symbols and operation. Hands on lab exercises are a major part of this course.

Electro and Proportional Pneumatic Technology (3- 4 days):

This course covers construction and operation of solenoid valves, electric sequence and PLC interfaces, proportional pressure control and closed loop electro-pneumatic concepts. Hands on lab exercises are a major part of this course.

Advanced Pneumatic Technology (2 days):

This course covers further understanding of the gas laws, fundamental sizing calculations, and sequence controls and concepts. Hands on lab exercises are a major part of this course.

Fieldbus for Automation (3- 4 days):

This course covers industrial serial link interfaces with modern automation components such as pneumatic valve manifolds and proportional devices. Node configuration, addressing, and diagnostics are explained as they would apply in the main industrial fieldbus protocols. Hands on lab exercises are a major part of this course.